

# 30" *maestro series*™



Industry's First "Electric Wall Oven" With Moist Cook Feature



MWOV301ES



MWOV302ES



Integrated rotisserie

## 30" ELECTRIC WALL OVEN FEATURES:

- High quality stainless steel exterior
- Glass oven bottom - for easy cleaning
- Hidden heating elements - for clean oven cavity
- Integrated rotisserie
- Six roller rack positions
- Halogen lights for better viewing
- Glass touch control panel
- Rotary selection knobs
- Child lock-out for added safety
- Integrated meat probe
- Countdown Timer
- Timed Cooking
- Delayed Cooking

## OTHER:

- 240 VAC at 60 Hz
- Single Oven Circuit Breaker: 30 AMP
- Double Oven Circuit Breaker: 40 AMP
- ETL Certified for USA and Canada
- 1 Year full parts and labor covers entire product (conditions apply)

## OVEN HEATING MODES:

- |                          |                    |
|--------------------------|--------------------|
| Self Clean               | Perfect Convection |
| Bake                     | *Moist Convection  |
| Convection Bake          | Roast              |
| *Moist Bake              | *Moist Roast       |
| *Moist Delicate Bake     | Convection Roast   |
| Broil                    | Probe Cooking      |
| Convection Broil         | Sabbath Mode       |
| Delicate Bake            | Hold Mode          |
| Delicate Convection Bake |                    |

\* Capital Exclusive Feature



**OVEN INFORMATION AND CABINET DRAWING:**

	SINGLE	DOUBLE
--	--------	--------

MODEL NUMBER	MWOV301ES	MWOV302ES
"A" DIMENSION-CUTOUT HEIGHT	28 1/4	52 1/2
"B" DIMENSION-CUTOUT WIDTH	28 1/2	28 1/2
"C" DIMENSION-CUTOUT DEPTH	24	24

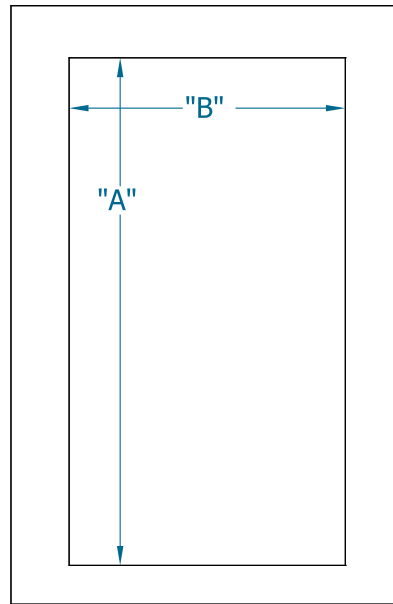
OVERALL WIDTH	29 7/8	29 7/8
OVERALL HEIGHT	28 9/16	52 3/4
OVERALL DEPTH TO CABINET FACE	23 3/4	23 3/4
OVERALL DEPTH TO DOOR FRONT	25	25

SHIPPING WEIGHT	275 lb.	490 lb.
-----------------	---------	---------

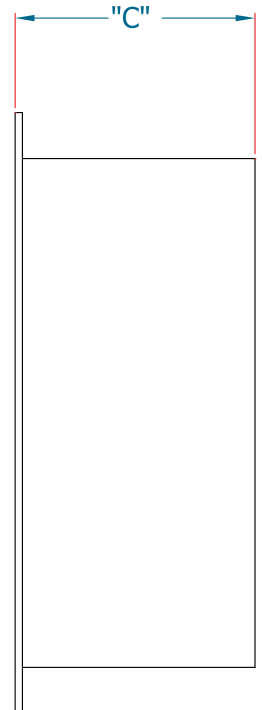
ELECTRICAL	240 VAC, 60 Hz	240 VAC, 60 Hz
CIRCUIT BREAKER (FUSE) REQUIRED	30 Amp	40 Amp

Note: Cabinets must be manufactured to support the listed shipping weight of the product.

**DOUBLE OVEN CABINET CUTOUT**

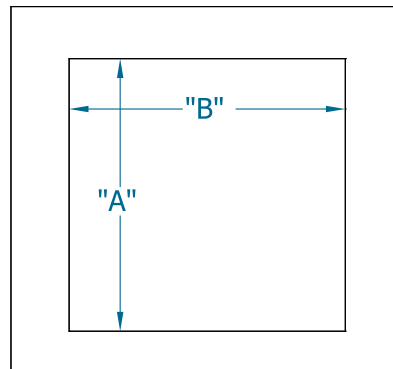


**FRONT VIEW**

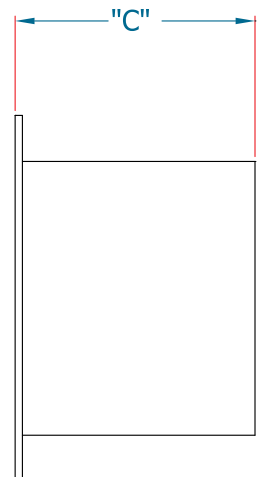


**SIDE VIEW**

**SINGLE OVEN CABINET CUTOUT**



**FRONT VIEW**



**SIDE VIEW**

